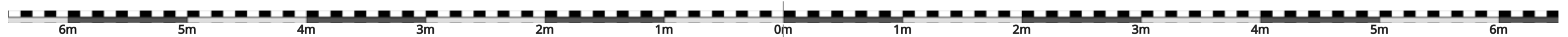
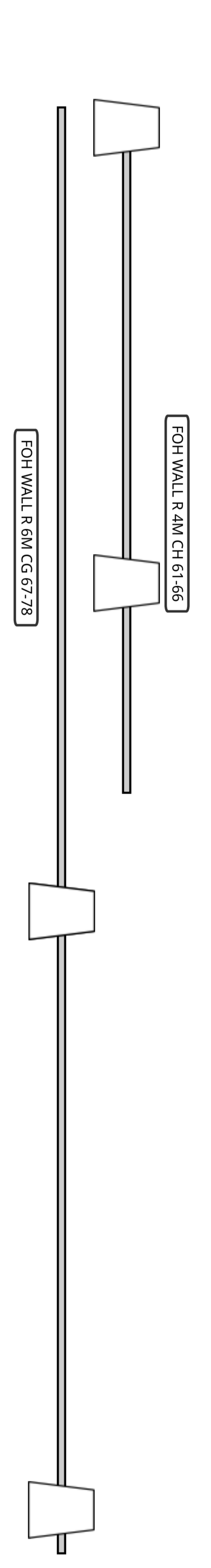
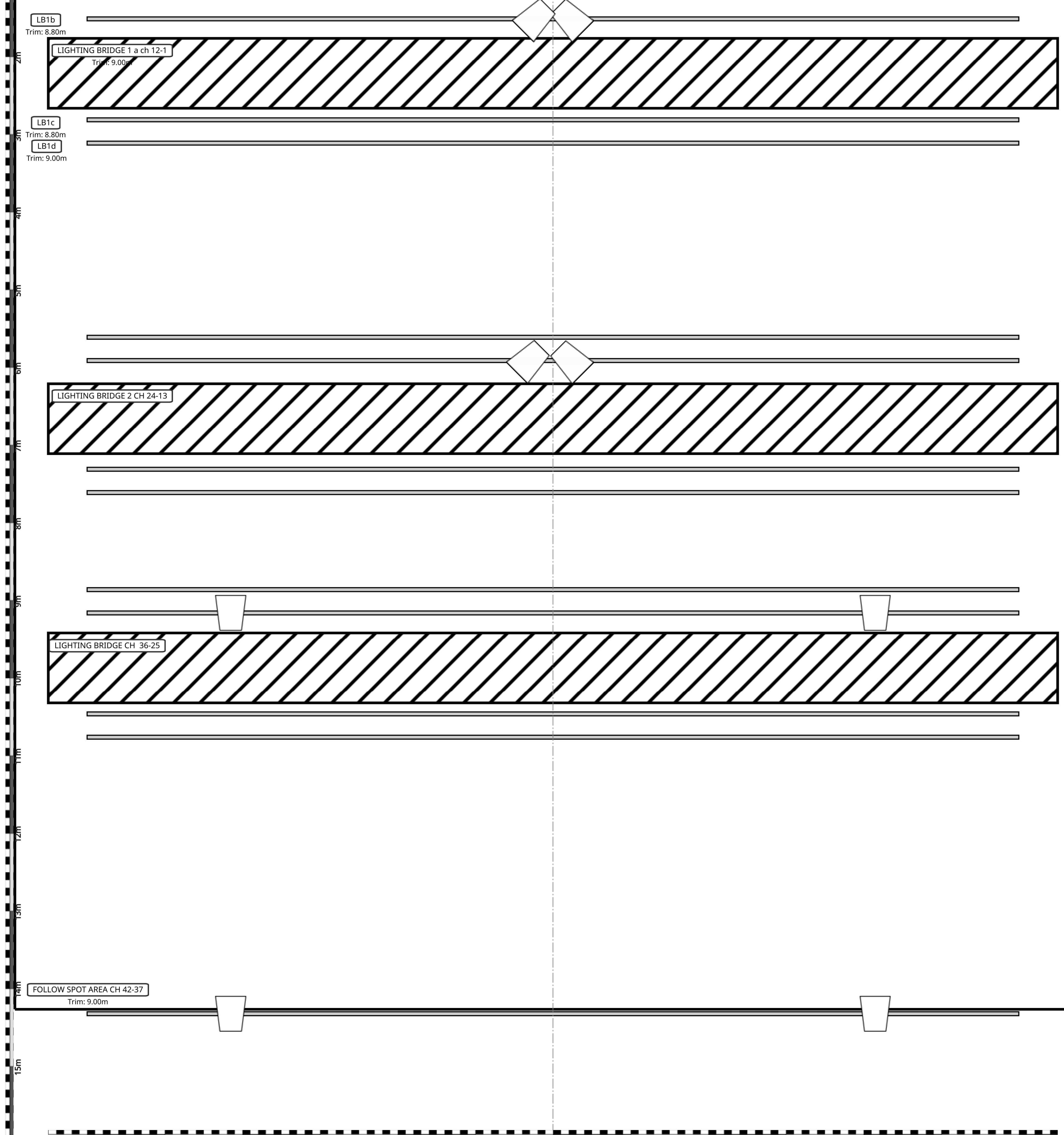
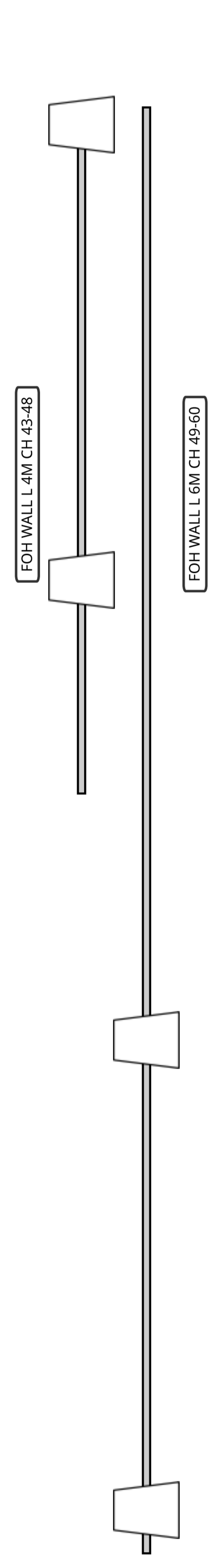
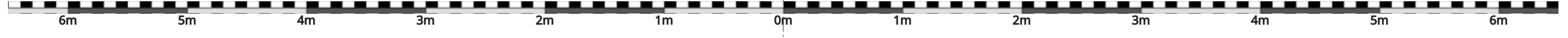
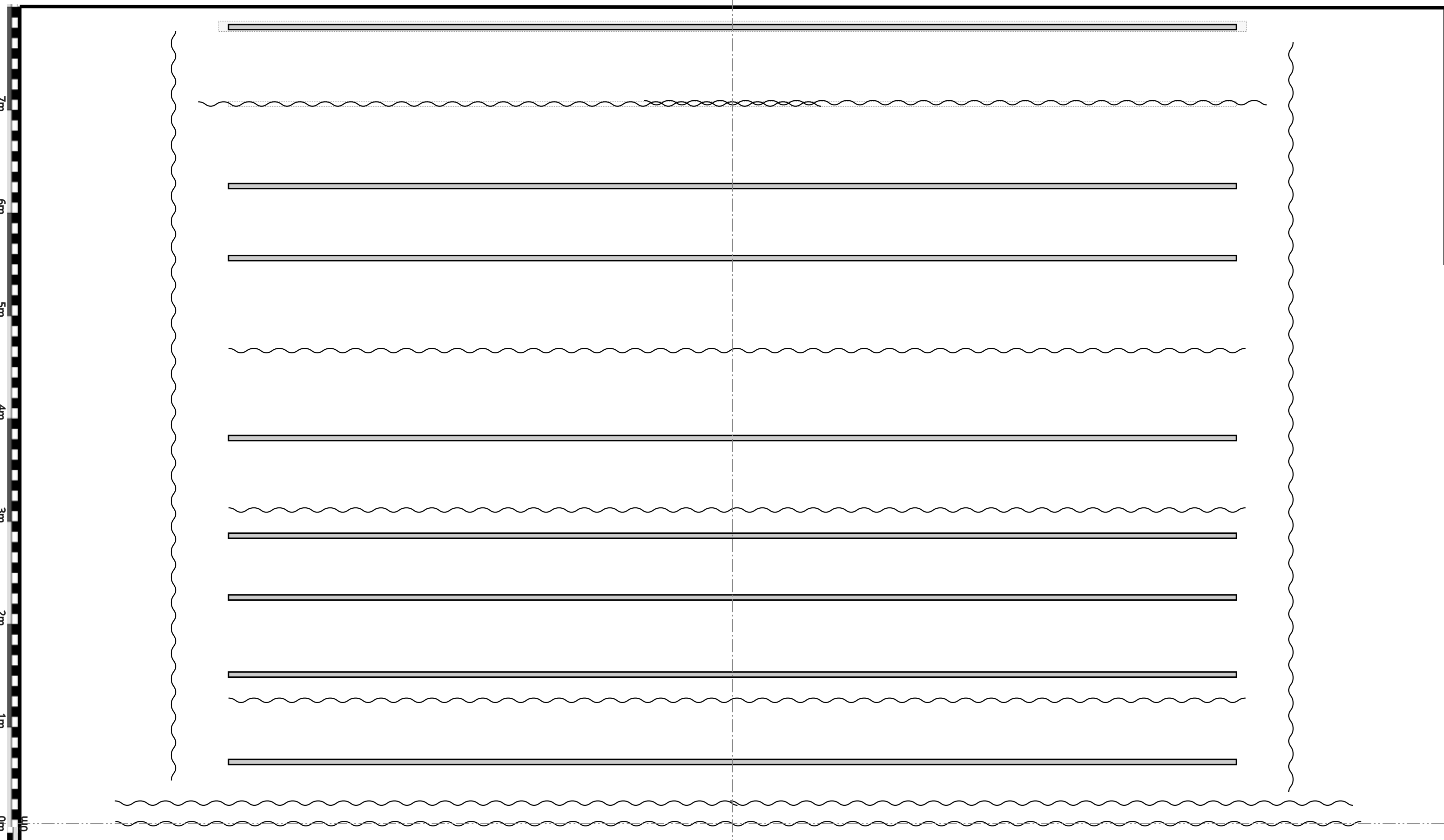




| Lineset Schedule |                             |       |
|------------------|-----------------------------|-------|
| 14               | M21 CYC                     | 7.75m |
| 13               | M20 TABS                    | 7.00m |
| 12               | M18 LX4<br>ch 128-139 (144) | 6.20m |
| 11               | M16 AVAILABLE               | 5.50m |
| 10               | M14 BORDER                  | 4.60m |
| 9                | M12 LX3<br>ch 116-127       | 3.75m |
| 8                | M10 BORDER                  | 3.05m |
| 7                | W8 AVAILABLE                | 2.80m |
| 6                | M8 LX 2<br>ch 104-115       | 2.20m |
| 5                | M6 Cinema Screen            | 1.45m |
| 4                | W4 BORDER                   | 1.20m |
| 3                | M4 LX1<br>ch 91-103         | 0.60m |
| 2                | W2 TABS                     | 0.20m |
| 1                | M11 BORDER                  | 0.00m |



Cumbernauld Theatre Trust gratefully acknowledges funding from Creative Scotland and North Lanarkshire Council.  
 Cumbernauld Theatre Trust Ltd is a Registered Company limited by guarantee No. SC066490 - Scottish Charity OSCR Registered No. SC050550.  
 Registered Office: Cumbernauld Theatre Trust Ltd, Lanternhouse, South Kilburn Ring Road, Cumbernauld, North Lanarkshire, G67 2US.  
 Lanternhouse is a registered trademark (UK00003494622) owned by Cumbernauld Theatre Trust Ltd.

SYMBOL KEY



|   |  |                                 |
|---|--|---------------------------------|
| SWL<br>MOTOR DRIVEN BARS<br>400KG                                     | SCALE 1:75<br>(EXCEPT WHERE NOTED)<br>DATE: AUG 2020 | DRAWING No.<br><b>1</b><br>of 4 |
| WINCH DRIVEN BARS<br>240KG  | REVISION:<br>DRAWN BY: MATT NEVINS                   |                                 |
| ALL OVERHEAD BARS ARE<br>9.8 METERS LONG<br>BARS ARE FULLY OUT AT 10M | MAIN AUDITORIUM<br>FULL LX                           |                                 |