

VISUAL GUIDE FOR CUMBERNAULD THEATRE AT LANTERHOUSE



I am going to attend a performance at Cumbernauld Theatre at Lanternhouse, South Kildrum Ring Road, Cumbernauld, North Lanarkshire, G67 2UF.



The show will start at 7.30pm, I should arrive a little earlier than this. The doors to the performance will open around 20 minutes before, and the Bar/Kiosk will be open all day.



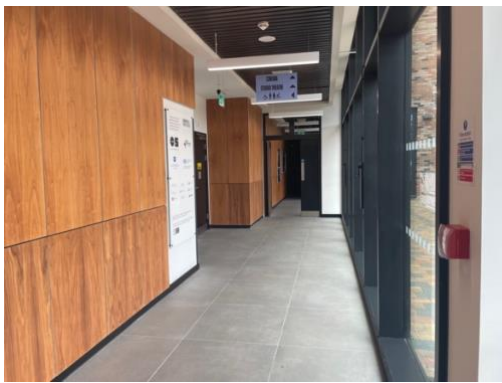
This is the Main Entrance to Cumbernauld Theatre at Lanternhouse where the performance will be taking place. The front of Cumbernauld Theatre at Lanternhouse looks like this.



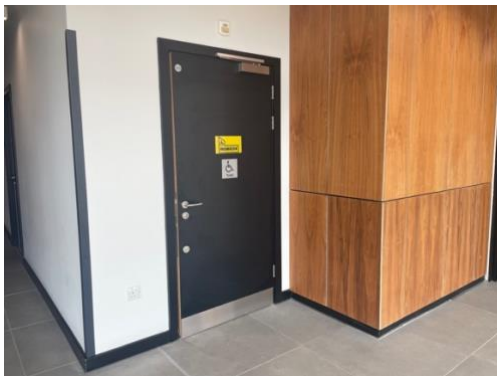
If I walk straight, I will reach the Box Office which will be on my right-hand side. This is where I can buy tickets or collect prepaid tickets for the show. If I have an e-ticket on my phone, or already have my tickets, I do not need to go to the box office.



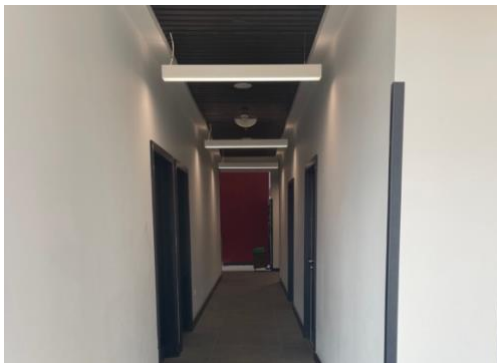
There is a Bar/Kiosk in the Foyer where I can buy alcoholic and non-alcoholic drinks, and snacks before the show. I will find it on my left-hand side, or across from the Box Office.



If I want to find the toilets, I should walk right from the entrance to the building and enter the corridor.



If I walk through the corridor, there is an accessible toilet on my left-hand side. It will be clearly marked.



If I turn left, I will reach the regular toilets. They will be clearly marked. If I need directions, I can ask one of the staff members for help.



When the Main Auditorium is open, I can take my seat before the performance starts. This is the corridor to the Main Auditorium.



Auditorium/Performance space: The performance takes place in a traditional theatre. I will watch the performance in this room. When the show is ready to start, the lights will dim and the actors will come onto the stage. During the show, they may interact with the audience.



At the end of the show the audience will clap to show the actors that they enjoyed the show. When the clapping has ended, the lights will get brighter. This means the show is over. I can now leave the theatre. I should exit back through the way I came in.
