



I am going to Baltic at Lanternhouse, South Kildrum Ring Road, Cumbernauld, G67 2UF.



The show will start at 2pm, I should arrive a little earlier than this.

The doors to the performance will open around 20 minutes before, and the Bar/Kiosk will be open all day.

The show will last approximately 2 hours and 15 minutes and will include an interval break.



This is the Main Entrance to Cumbernauld Theatre at Lanternhouse where the performance will be taking place.

The front of Cumbernauld Theatre at Lanternhouse looks like this.



When I am inside, If I walk straight, I will reach the Box Office which will be on my right-hand side. There is a Christmas tree across from the Box Office.

This is where I can buy tickets or collect prepaid tickets for the show. If I have an e-ticket on my phone, or already have my tickets, I do not need to go to the box office.

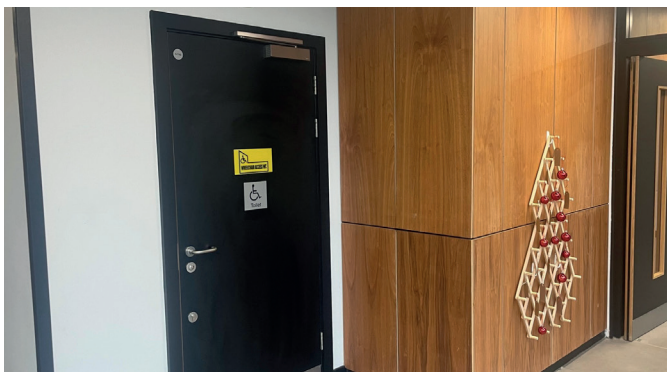


There is a Bar/Kiosk in the Foyer where I can buy alcoholic and non-alcoholic drinks, and snacks before the show.

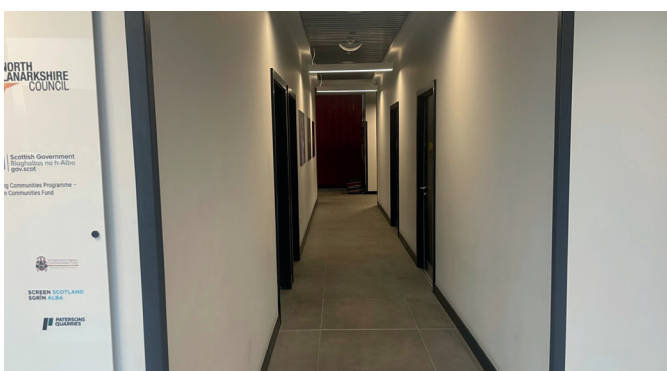
I will find it on my left-hand side, or across from the Box Office.



If I want to find the toilets, I should walk right from the entrance to the building and enter the corridor.



If I walk through the corridor, there is an accessible toilet on my left-hand side. It will be clearly marked.



If I turn left, I will reach the regular toilets. They will be clearly marked.

If I need directions, I can ask one of the staff members for help.

---





**Auditorium/Performance space:** Baltic takes place in a traditional theatre. I will watch the performance in this room.

When the show is ready to start, the lights will dim and the actors will come onto the stage. During the show, they may interact with the audience.



If I am disturbed by any loud noises, I can ask one of the staff members for ear defenders. I will have to return them after the show finishes.



If I would like to take some time out during the show I may leave at any time and use the Breakout Space.

If I cannot find it, I should look for a sign "Breakout Space" or ask a member of staff for directions.



At the end of the show the audience will clap to show the actors that they enjoyed the show.

When the clapping has ended, the lights will get brighter. This means the show is over.

I can now leave the theatre.

I should exit back through the way I came in.

---

---

# ABOUT BALTIC

Baltic is about a girl called Elsbeth who has secret magical powers. She lost her brother Kai after he was taken by Chilblain, the Snow Queen. Elsbeth lives with her mum, Dame Agnes Avalunch, and has a friend called Sammy Slush.

In the show, Elsbeth, Aggie and Sammy go on an adventure to try and find Kai. They meet new characters, sing songs and see magical things along the way.

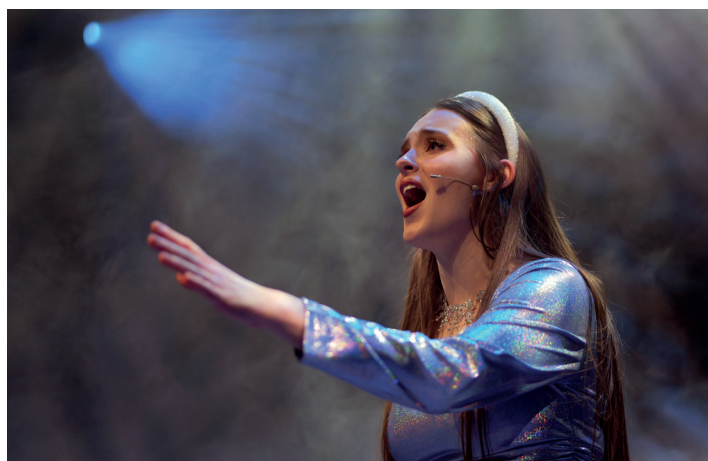
When the actors start moving on stage, the story has begun.

The lights, music and set change to show different parts of the story.

The show takes place in the village of Glenfrost, the snowy forest and the Snow Queen's palace.

Different scenes help show Elsbeth's journey to bring her brother home.

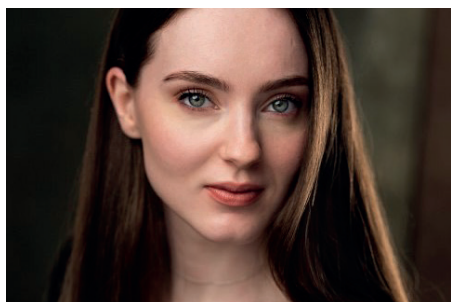
---





---

# CAST



## LAUREN O'HARE

Lauren plays Elsbeth

Elsbeth has magical powers, but no one else knows.



## ALEX ROBERTSON

Alex plays Dame Agnes Avalunch ('Aggie')

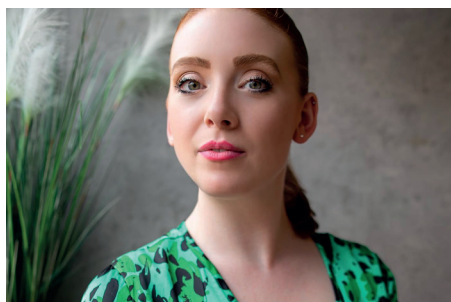
Aggie is Elsbeth and Kai's mum.



## JERRY TAYLOR

Jerry plays Sammy Slush

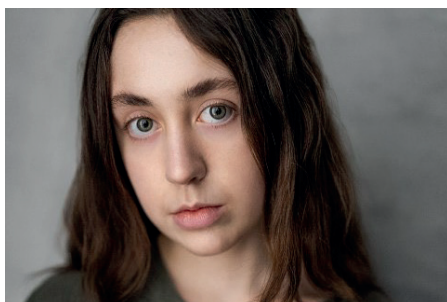
Sammy is Elsbeth and Aggie's friend.



## ABBIE WATSON

Abbie plays Chillblain, the Snow Queen

Chillblain lives in a castle.



## MILLY SWEENEY

Milly plays Jack Frost

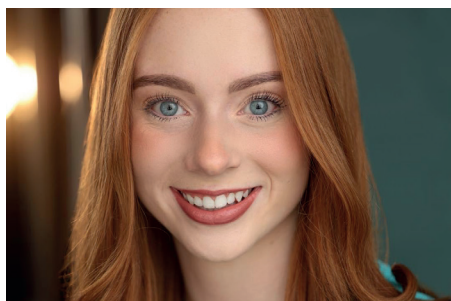
Jack Frost is Chillblain's sidekick and also stays at the castle.



## KATHLEEN MCLENAGHAN

Kathleen plays Nolaff.

Nolaff is a talking snowman who has lost his carrot.



## ABBEY GORDON

Abbey is a dancer



## NATHAN FERGUSON

Nathan is a dancer



## MILLY SWEENEY

Isla is a dancer

There are also seven junior dancers.

---

# WHAT HAPPENS IN THE SHOW

---



The stage will have lights, sound effects and snowy scenery that help tell the story.

The actors appear throughout the show. Some actors play one character, and some actors play many different characters.

There is a village set and an ice palace set. These appear at different times and change during the story.



The performers move between the village, the snowy forest and the ice palace.

There are several songs in the show. Some songs are sung by one performer, and others involve many performers.

Sometimes the performers speak to the audience.

You can join in if you want to, but you don't have to.

There is a short moment where characters travel on a sled through the snow.

The show ends with all the performers coming on stage together.

